

# STRATEGY UPDATE

Colin Evans

*Strategic Programme Manager*



**Diocese of Canterbury**  
CHANGED LIVES → CHANGING LIVES

# FIRST FUNDING REQUEST TO SMMIB (RECAP)

## Programme Capacity

- ✓ Strategic Programme Management
- ✓ Strategic comms support enhance engagement
- Supporting deaneries (deanery planning)
- Data & measurement role



# FIRST FUNDING REQUEST TO SMMIB (RECAP)

## Focus on increasing young people

- 7 youth ministers in our largest churches
  - ✓ 4 recruited so far
    - 1 advertised
    - 2 of original churches withdrawn → reserve list
- Youthscape Launchpad
  - 12 churches in first cohort launched Sep-23
- Ministry Experience Scheme
  - 3 in first cohort experiencing youth ministry



## THIS FUNDING REQUEST

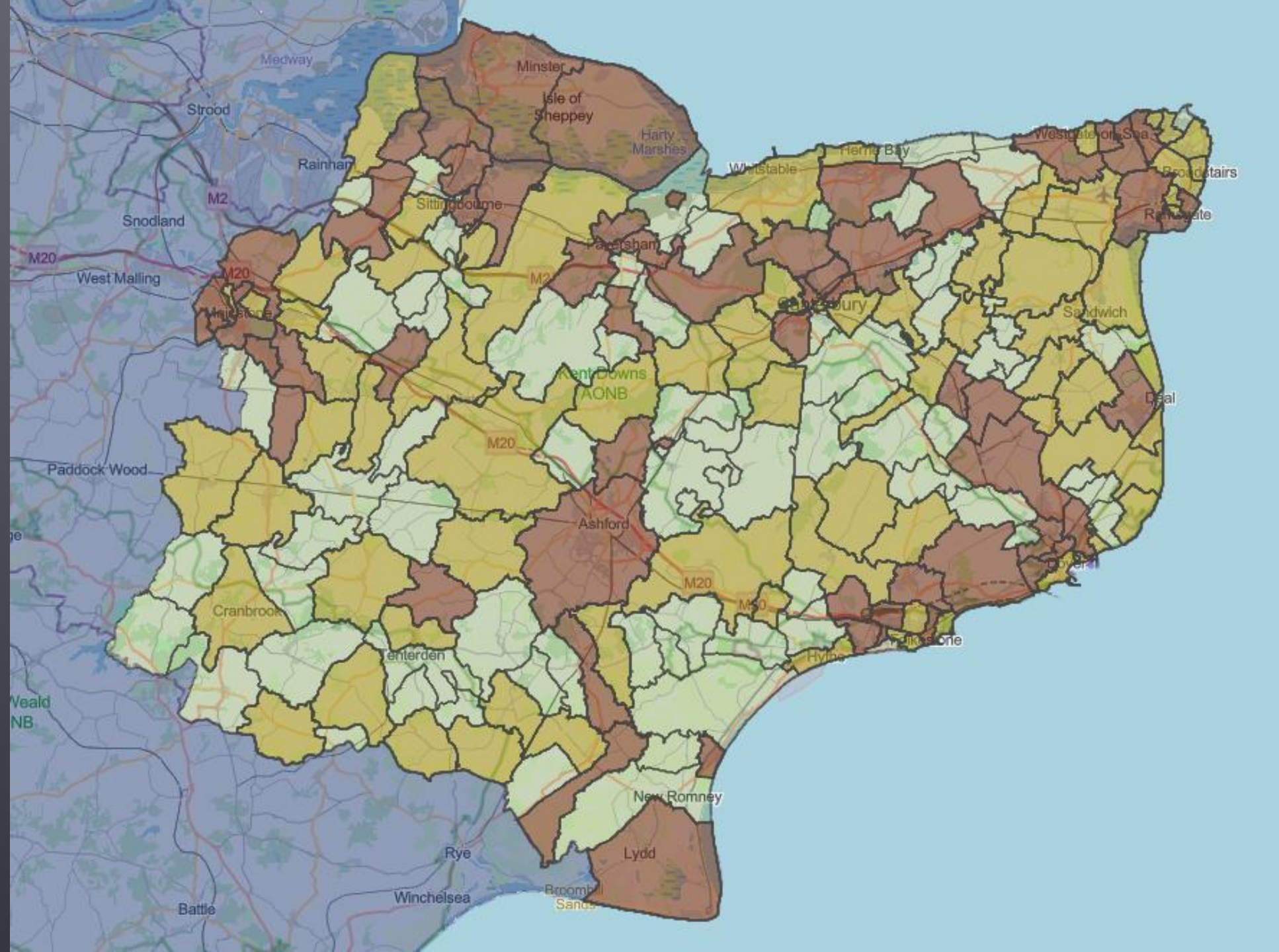
- Resourcing Church & Planting Strategy
  - Indicative 5-year programme
  - Church Planting Advisor (NCI required)
- Project 1 – Margate
- Project 2 - Maidstone



# OPPORTUNITIES

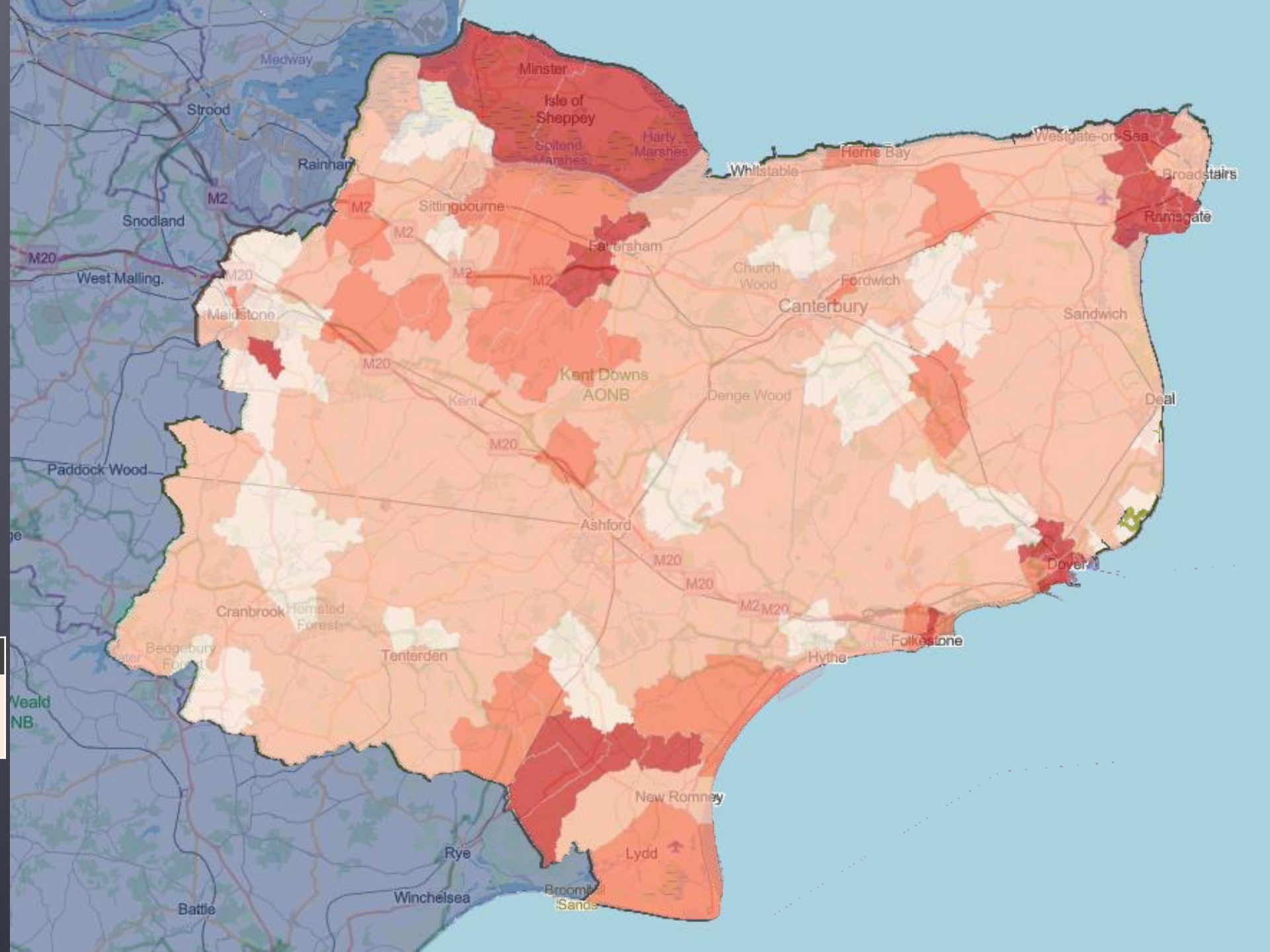
There are plenty of opportunities for church revitalisation and planting in the diocese.

Attendance per capita is below 1% in the 'red parishes' shown on the map, where 45% of the diocesan population lives.



# DEPRIVATION

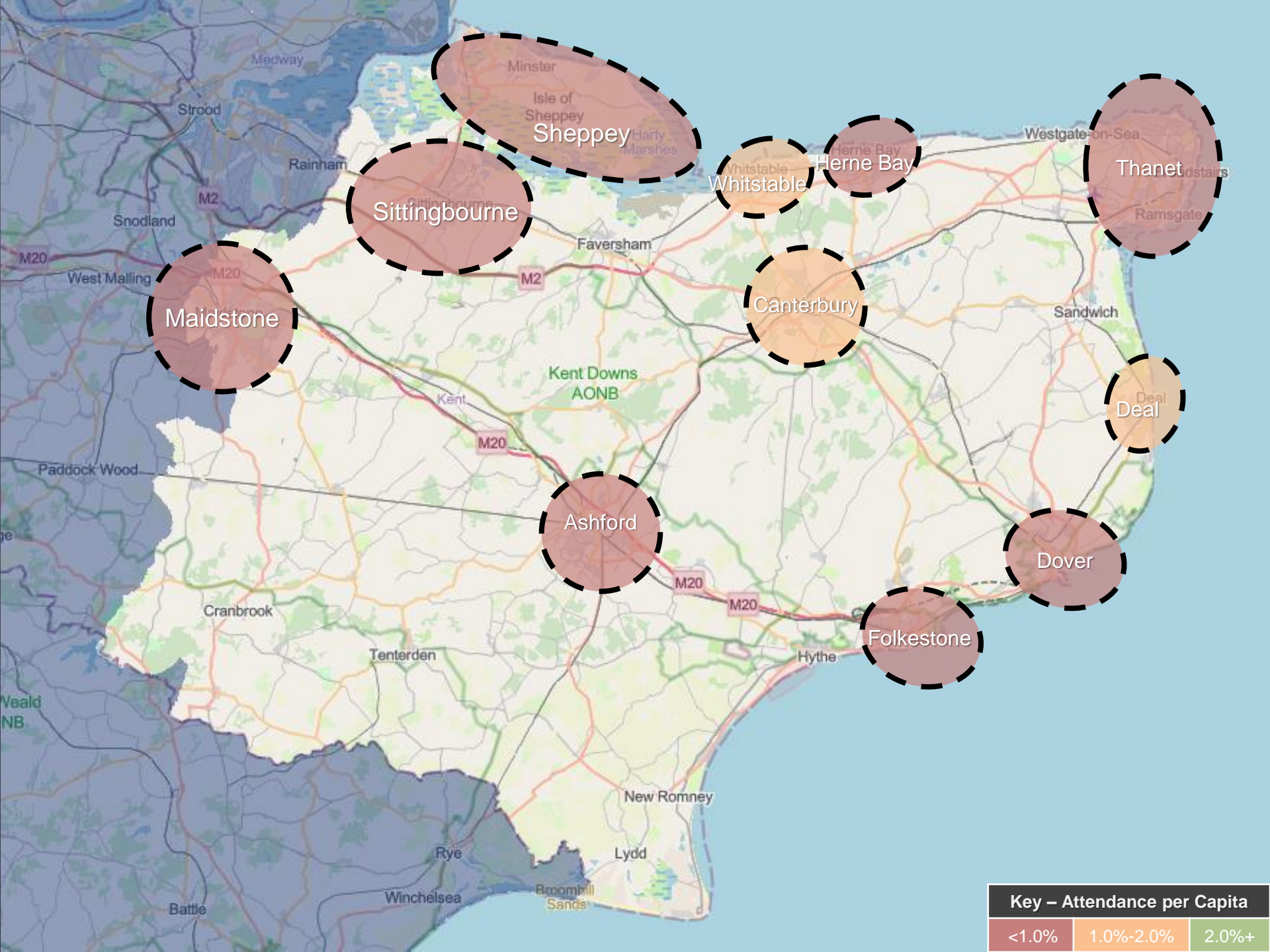
The coastal towns are the areas within the diocese that have the greatest levels of deprivation.



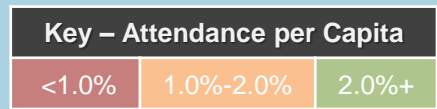
National Deprivation Scores			
Most Deprived 10%	Most Deprived 20%	20-80%	Least Deprived 20%

# ATTENDANCE IN MAJOR POPULATION AREAS

Given both attendance and deprivation data, a focus on our significant areas of population is strategically important.



Town/City	Population	Attendance per Capita
Thanet	143,000	0.9%
Maidstone	96,000	0.9%
Ashford	75,000	0.7%
Folkestone	53,000	0.9%
Canterbury	51,000	1.3%
Sittingbourne	50,000	0.8%
Isle of Sheppey	40,000	0.4%
Dover	39,000	0.8%
Herne Bay	34,000	0.8%
Whitstable	33,000	1.5%
Deal	31,000	1.6%
Rest of Diocese	343,000	1.4%
Total for Diocese	980,000	1.1%



# 5-YEAR PLAN

Phase	Location	When	Status
1	Margate	2024	Funding approved
1	Maidstone	2024	Funding approved
1a	All Saints, Loose	2024/5?	Suitable location being sought. No additional funding needed
2	Ashford	2025	Planning work underway with Revitalise Trust. Proposal expected Jan-25

- Indicatively next opportunities might be Canterbury, Dover
- Exploring how this fits with deanery plans and missional energy



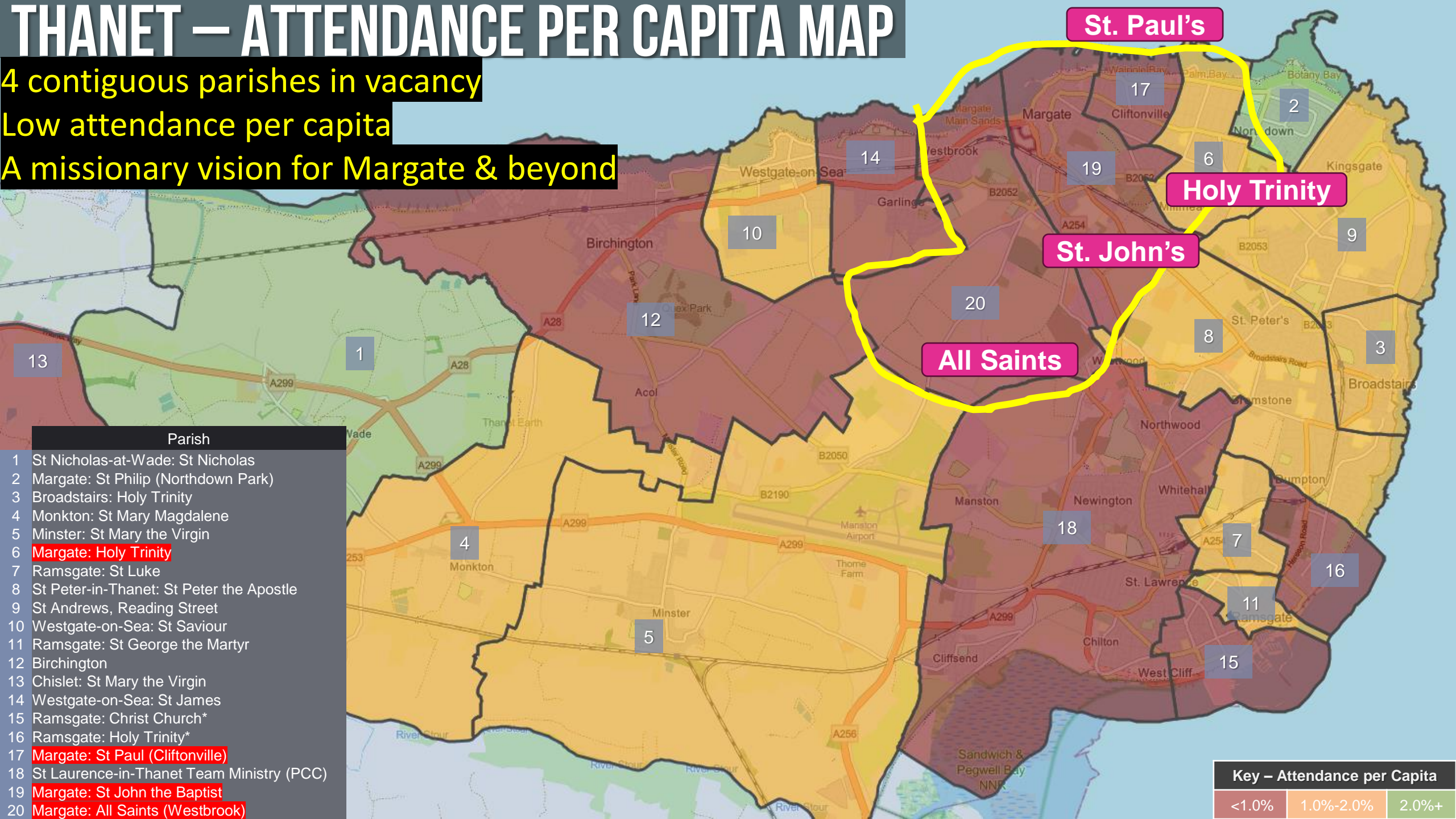


# THANET – ATTENDANCE PER CAPITA MAP

4 contiguous parishes in vacancy

Low attendance per capita

A missionary vision for Margate & beyond



Parish
1 St Nicholas-at-Wade: St Nicholas
2 Margate: St Philip (Northdown Park)
3 Broadstairs: Holy Trinity
4 Monkton: St Mary Magdalene
5 Minster: St Mary the Virgin
6 Margate: Holy Trinity
7 Ramsgate: St Luke
8 St Peter-in-Thalet: St Peter the Apostle
9 St Andrews, Reading Street
10 Westgate-on-Sea: St Saviour
11 Ramsgate: St George the Martyr
12 Birchington
13 Chislet: St Mary the Virgin
14 Westgate-on-Sea: St James
15 Ramsgate: Christ Church*
16 Ramsgate: Holy Trinity*
17 Margate: St Paul (Cliftonville)
18 St Laurence-in-Thalet Team Ministry (PCC)
19 Margate: St John the Baptist
20 Margate: All Saints (Westbrook)

Key – Attendance per Capita		
<1.0%	1.0%-2.0%	2.0%+

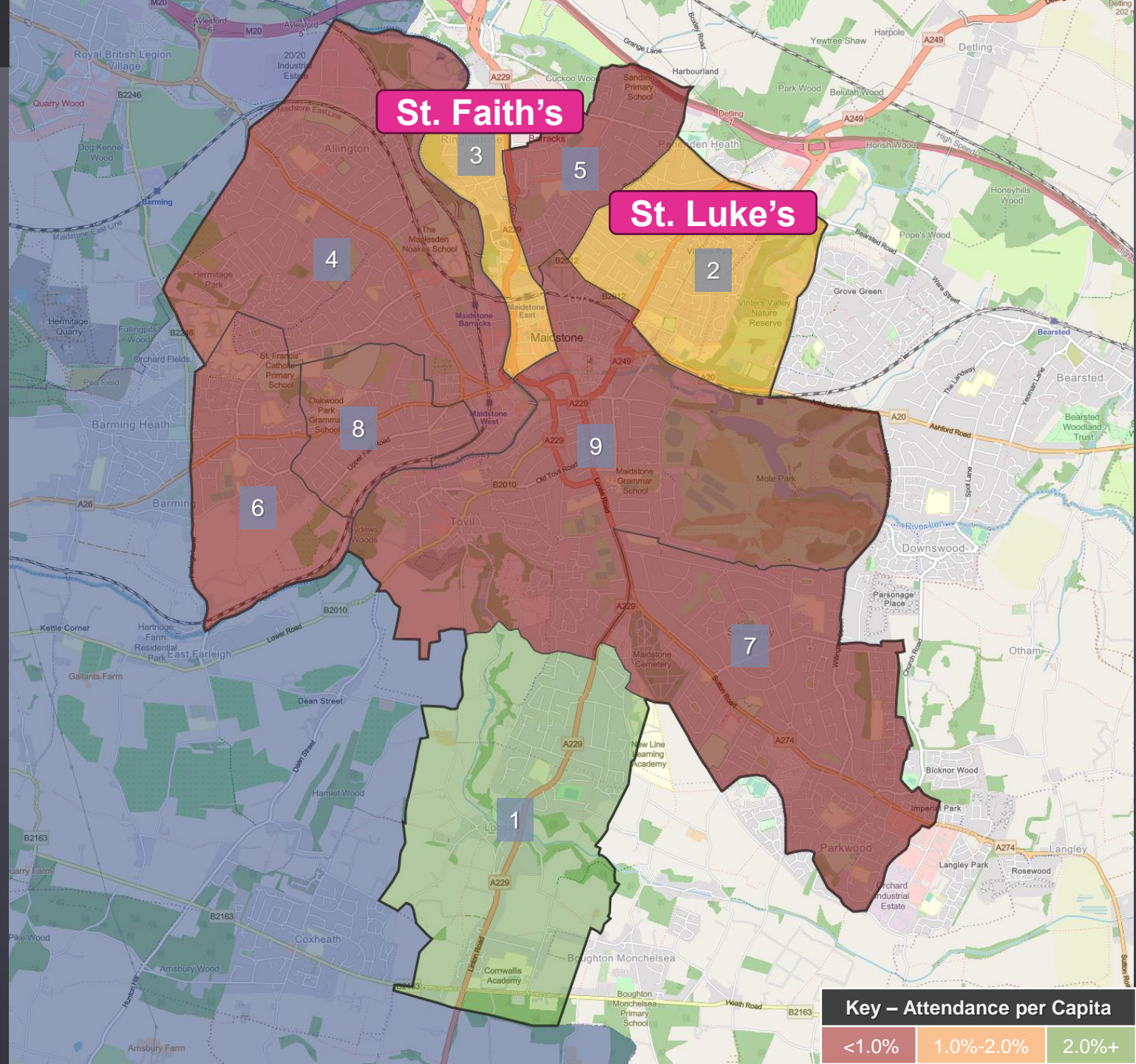
## MARGATE - HIGHLIGHTS

- 4 parishes in vacancy keen to work with each other
- Partnership with Revitalise Trust (expertise, contacts)
- Holy Trinity Margate to become resourcing church
  - Mark Nelson (was Associate Minister Saint) appointed
  - Resourcing St. Paul's Cliftonville (shared team)
- Worshipping community of 600+ in 5 years (25% U16)
- Preparation for stage 2 with St. John's and All Saints
  - including major building project at St. John's
- Further opportunities in Thanet

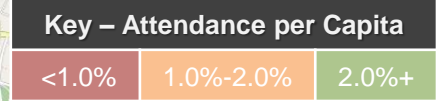


# MAIDSTONE – ATTENDANCE PER CAPITA MAP

St. Luke's attracts its congregation from a wide geographic area. This project enables St. Luke's as a resourcing church to St. Faith's and to other parishes across Maidstone where there is clearly missional need.



	Parish
1	Loose: All Saints
2	Maidstone: St Luke the Evangelist
3	Maidstone: St Faith w Ringlestone Hall
4	Allington: St Nicholas w Maidstone: St Peter
5	Maidstone: St Paul
6	Maidstone: St Andrew (Barming Heath)
7	Maidstone: St Martin
8	Maidstone: St Michael & All Angels
9	Maidstone: All Saints w St Philip w St Stephen (Tovil)



## MAIDSTONE - HIGHLIGHTS

- St. Luke's & St. Faith's already working in partnership
- St. Faith's effectively a new estate church plant
- Brand new church & community centre
  - Minister + children & families worker
- St. Luke's to become resourcing church in Maidstone
  - Associate minister + support for essential building refurb
- Worshipping community of 550+ in 5 years (25% U16)
- Support ambitious deanery growth target of 1000 adults
- Further revitalisation opportunities in Maidstone



## FUNDING REQUEST OUTCOME

- Request was for £3.24m over 5 years
- Request has been granted in full!
- Minor condition to be met in Maidstone
  - Showing how resourcing church will help more than St. Faith's
  - Connected through the deanery plan
- National press release expected soon



## NEXT STEPS - HIGHLIGHTS

- Recruit unfilled youth minister posts
- Get Margate & Maidstone projects up and running
- Continued focus on deanery planning
  - What might be the “game changers”?
  - Develop a rural growth strategy
  - Re-invigorate parish Mission Action Planning
  - Progress emerging deanery projects and how to fund
- Leading Your Church into Growth Conference in July 24
- Work on Ashford resourcing church proposal



## CLOSING THOUGHTS

- Our strategy is about growth
  - Encapsulated in our Three Bold Outcomes
- Because this is the mission that Jesus gave His church!
  - Not because we are trying to balance our budgets
- Looking for signs of growth (new life) in every parish, benefice and deanery
- Every one of us needs to be engaged in mission
  - Some bigger investment projects will help
  - But lots of local missional initiatives across our diocese will be critical

